



A programme of the
International Social Science Council (ISSC)

TRANSFORMATIONS TO SUSTAINABILITY




*Accelerating social
transformations
to a more just and
sustainable world*



*Creating an open
knowledge base on
transformations for
researchers and
practitioners*



*Advancing social-
science-led research on
social transformations to
sustainability*



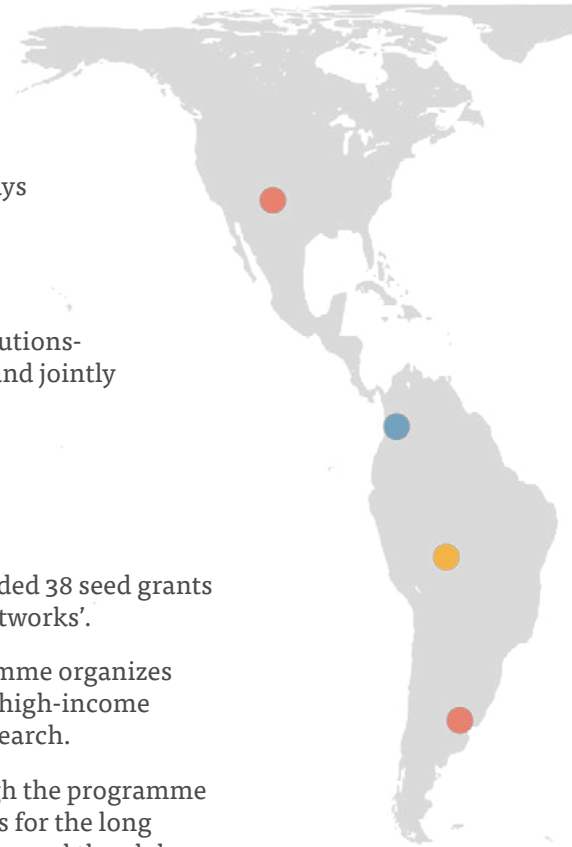
*Building capacity for
international research
collaboration around
the globe*

Rapid environmental change and persistent inequalities call for deep and lasting transformations in our societies. Understanding and advancing transformative change towards sustainability demands new ways of producing knowledge and making sure it gets used.

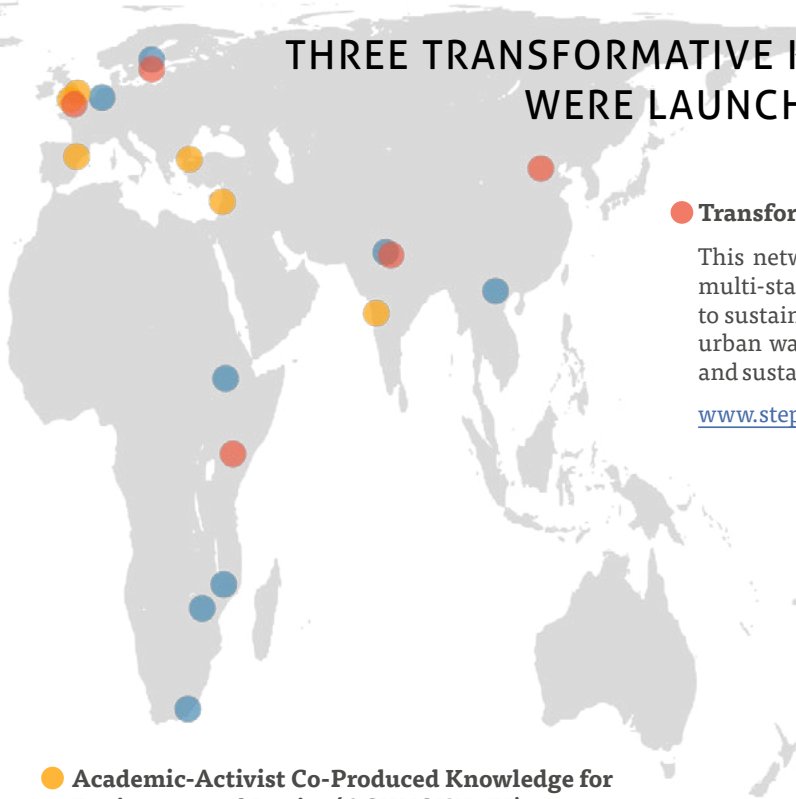
The ISSC Transformations to Sustainability (T2S) programme supports solutions-oriented, international research for sustainability, led by social scientists and jointly produced with societal stakeholders.

T2S has three main lines of activity:

- **Supporting innovative research:** Since 2014 the programme has awarded 38 seed grants and three major grants for international 'Transformative Knowledge Networks'.
- **Promoting knowledge exchange and research capacity:** The programme organizes events and activities to facilitate research collaboration across low- and high-income countries and to develop skills for doing inter- and transdisciplinary research.
- **Building a lasting global knowledge base:** Knowledge created through the programme aims to inform the development of solutions to sustainability challenges for the long term. Our growing network of researchers and practitioners stretches around the globe, connecting research to policy, practice and civil society at all levels.



THREE TRANSFORMATIVE KNOWLEDGE NETWORKS WERE LAUNCHED IN 2016



● **Transformative Pathways to Sustainability (PATHWAYS)**

This network uses research and creative facilitation methods with multi-stakeholder groups to understand and contribute to pathways to sustainability in three socio-ecological problem areas: sustainable urban water and waste; low carbon energy transitions for the poor; and sustainable agricultural and food systems for healthy livelihoods.

www.steps-centre.org/global

● **Transgressive Social Learning for Social-Ecological Sustainability in Times of Climate Change (T-LEARNING)**

This network researches how transformative and transgressive learning (T-learning) processes emerge, what they look like in the context of complex sustainability concerns, and how they can contribute to transformations to sustainability.

www.transgressivelearning.org

● **Academic-Activist Co-Produced Knowledge for Environmental Justice (ACKNOWL-EJ)**

This network studies community-level responses to extractive and other destructive development activities, exploring how alternative, transformative and practicable visions of sustainable and equitable futures can be born from resistance.

www.acknowledgej.org

CONNECT WITH THE TRANSFORMATIONS TO SUSTAINABILITY PROGRAMME

T2S is inspired by ambitious ideas about how to foster social transformations to sustainability. Join the discussions, sign up for the newsletter and access resources and opportunities for transformations research on our website.

www.transformationstosustainability.org

[@ISSCWorld](https://twitter.com/ISSCWorld)

 Contact us at transformations@worldsocialscience.org.

The Transformations to Sustainability programme is funded by the Swedish International Development Cooperation Agency (Sida) and contributes to Future Earth, the international research programme for global sustainability. It is coordinated by the International Social Science Council.

